

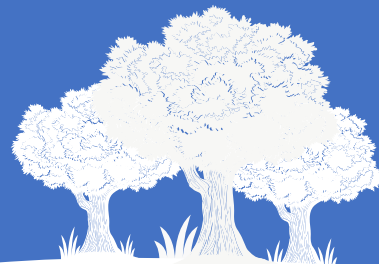
ST. MARY'S CE  
PRIMARY SCHOOL



# Welcome to Early Years



Investing in  
the UNIQUENESS  
of each individual



[www.stmaryscephprimary.co.uk](http://www.stmaryscephprimary.co.uk)



Durham and Newcastle Diocesan Learning Trust is a company limited by guarantee (Company Number 10847279) and exempt charity registered in England and Wales at the Cal Building 4<sup>th</sup> Floor, Coble Dene, Royal Quays, North Shields, Tyne and Wear NE29 6DE

"I Am Fearfully And Wonderfully Made"  
- Psalms 139 v14

Dear Families,

Thank you for choosing St Mary's CE Primary School Nursery. Everybody working with your children strives to give them the best possible start to school life. We aim to create a secure and nurturing environment in which your children begin to love learning and challenge themselves to make good progress in all areas of their development.

We believe in having an open-door policy and work in partnership with parents, grandparents and those involved in your child's daily care. We have open channels of communication, which include home link books, parent's evenings and school ping.

This booklet is an introduction to the philosophy and workings of the Early Years Foundation Stage.

If you have any questions or concerns, please do not hesitate to come and speak to a member of staff.

*"Our aim is to provide a caring Christian environment where we can invest in the uniqueness of each individual. We all work to ensure that children are happy and secure. We create a stimulating environment where children can achieve their full potential. We aim promote Christian and British Values to develop the children socially, morally, spiritually and culturally by promoting attitudes of mutual respect and responsibility."*

Investing in

the UNIQUENESS

of each individual

"I Am Fearfully And Wonderfully Made"  
- Psalms 139 v14



## Contact Information:

St. Mary's CE Primary School  
The Green  
Long Newton  
Stockton-on-Tees  
TS21 1DL  
Phone: 01642 581716  
Email: [office@stmaryscephprimary.co.uk](mailto:office@stmaryscephprimary.co.uk)  
Web: [www.stmaryscephprimary.co.uk](http://www.stmaryscephprimary.co.uk)  
Facebook: Follow @stmaryscephprimary

## Staff

Headteacher: Mr S Smith  
Teachers: Mrs Pattinson and Mrs Green  
Higher Level Teaching Assistant: Mrs Corcoran  
Teaching Assistant: Mrs Robson

## Opening Times:

Morning Session: 8:45am – 11:45am

Afternoon Session: 12:15pm – 3:15pm

Parents/carers are expected to bring their children to school for the start of the session and to collect them at the end of each session. If this is not always possible, please inform the class teacher or office before the start of the session the name of the person who will be collecting your child.

## Admissions Policy:

Children living within the catchment area of the school will be offered places in the nursery, when they are available, at the start of term after their third birthday.

These places are allocated according to date of birth with the older children being offered a place first. When there are extra vacancies, places will be offered to children living outside the catchment.

The full admissions policy is available on the school website or on request from the school office.

**The offer of a place in the nursery does not automatically guarantee a place in St. Mary's CE Primary School.**

## Right from The Start

Our curriculum is designed to recognise children's prior learning, both from previous settings and their experiences at home. We work in partnership with parents, carers and other settings to provide the best possible start at St. Mary's, ensuring each individual reaches their full potential from their various starting points. We recognise the crucial role that Early Year's education has to play in providing firm foundations upon which the rest of a child's education is successfully based.

## Core Christian Values

These are St Mary's CE Primary School's Core Christian values, which are at the heart of our school.

🌿 Love 🍃 Trust 🍂 Hope

At St. Mary's, we believe it is important to develop core values by which to live and which help to develop a moral and spiritual awareness.

We aim to explore the meanings of the core values and their significance in school.

The gifts of love, trust and hope are the values we want our children to leave with and use throughout their life.



# St. Mary's CE Primary School Wrap Around Child Care - Doves



We offer both 15 and 30 free hours childcare. Please speak to the school office and visit <https://www.gov.uk/30-hours-free-childcare> to find out about the 30 free hours you may be entitled to.

With the support of St. Mary's Breakfast and Afterschool Club, we are able to offer full wrap around care for 3 to 4 year olds. Places are limited. If you would like to register, or require more information, please contact the school office.

Activity	From	To	Cost
Breakfast Club*	7:30am	8:45am	£5
Morning Session	8:45am	11:45am	£16
The cost of a school meal is £3.30			
Afternoon Session	1:00pm	3:15pm	£16
After School Club*	3:15pm	4:15pm	£3.25
	3:15pm	5:45pm	£10.00

All additional sessions need to be booked through the school office.

Breakfast Club starts at 7:30am until the start of school - £5

After School Club starts at 3:15pm until 5:45pm. This can be booked in hour slots via ParentPay



## Uniform

School uniform at St. Mary's CE Primary School is as follows:

- Navy blue sweatshirt or cardigan
- White/blue shirt or polo shirt or blouse
- Grey trousers, skirts or pinafore
- Grey shorts or blue gingham dresses in warmer weather
- Black school shoes
- Spare trainers for playtimes to be left at school  
*(having the school logo is optional)*

### Indoor PE Kit

- White or Navy PE T-Shirt
- Navy blue shorts
- Plimsoles or trainers

### Outdoor PE Kit:

- Navy blue tracksuit bottoms/leggings
- Navy blue sweater/hoodie
- Trainers

Uniform is available to order through Etika and Motif8

<https://www.etikauniforms.co.uk/st-marys-primary-school-ts21>

<https://www.motif8.co.uk/schools/primary-schools-s-z/st-mary-s-long-newton.html>

The children also spend a lot of time playing outdoors in all weathers so it is important they have a warm coat and wellies or a change of footwear for outside.

In case of toileting accidents, a supply of clothes is kept in the classroom or if you would like, you can send a spare pair of clothes in a bag. If your child needs to borrow clothes, we would really appreciate them being washed and returned to school as soon as possible. It is the policy of St. Mary's CE School that no rings, earrings or other jewellery is worn at school.

**PLEASE NAME ALL SCHOOL CLOTHING.  
This is very important so that clothing does  
not get mixed up or lost.**

## Safeguarding

Parents and carers should be aware that the school has a duty to take reasonable action to ensure the welfare and safety of its pupils. In cases where staff have cause to be concerned that a pupil may be subject to ill-treatment, neglect or other forms of abuse, staff will follow the school's Child Protection Procedures.

### Special Educational Needs and/or Disability

All children are considered as individuals and therefore having individual needs. If a child is having difficulties in any area, this will be first discussed with the parents and any support required put in place within school. Outside agencies' advice and support may be sought if this is agreed with parents/carers. A copy of the school's SEND policy is available on the school's web-site and on request from the school office.

### First Aid and Medication

Should an accident occur in the Early Years Foundation Stage or a child feels unwell, he/she will be seen by a qualified first aider. Should further action be deemed necessary, parents or emergency contacts will be informed. If a child has any special medical condition or needs to take prescribed medication, please contact the school office to complete the appropriate form.

### Car Parking

The school car park is for staff and disabled use only.



## Early Years Foundation Stage Principles

The Early Years Foundation Stage is based on 7 key features of effective practice:

1. The best for every child.
2. High-quality care.
3. The curriculum: what we want children to learn.
4. Pedagogy: helping children to learn.
5. Assessment: checking what children have learnt
6. Self-regulation and executive function
7. Partnership with parents

The staff in Early Years will aim to enable your child to show the characteristics of effective learning which are the building blocks of how your child will continue to learn throughout their education.

These characteristics are split into three key areas:

### Playing and Exploring

### Active Learning Creating

### Thinking Critically

The Early Years is also split into 7 different areas of learning, which will be continually assessed by the Early Years team.

Prime Areas:

- Communication and Language
- Physical Development
- Personal, Social and Emotional Development

Specific Areas:

- Literacy
- Mathematics
- Understanding the World
- Expressive Arts and Design

## Early Reading

Reading is at the heart of our curriculum and our aim is to encourage a love of reading right from the start. In EYFS topics are carefully planned around a selection of engaging texts across all genres. The aim is to expose children to a range of books that not only develop a love of reading, but have been chosen specifically to develop their oracy, vocabulary and comprehension. These will be embedded in our provision through activities, story sessions and on display for children to access independently.

### Phonics

We follow the Phonics Bug phonics programme to ensure consistency across the school. In Nursery children focus on Phase 1 which concentrates on developing speaking and listening skills and lays the foundations for phonics work which starts in Phase 2.

In Reception, depending on their attainment, children will begin Phase 3 where they will develop GPC and segmenting and blending skills to decode words. During the Summer term, children may move on to Phase 4 if they are ready.



## Mathematics

In Nursery, children develop a love of maths through games, songs, rhymes, and play using concrete manipulatives. There is a focus on the following counting principles; one to one correspondence, stable order and cardinal principle. Children's fine manipulative skills are a focus to develop 1-1 correspondence so children count accurately.

In Reception, we follow the Power Maths scheme of work. High quality learning environments and meaningful interactions with adults, support children in developing mathematical thinking and discussion. Pupils learn through games and tasks using concrete manipulatives and pictorial structures and representations which are then rehearsed applied and recorded within their own child-led exploration.



## Assessment

In our initial meeting, we will talk to you about your child so that we can start to get to know them and share information about them. Once your child has settled in, Nursery staff will start to develop a picture of what they can do and areas where they need to develop. This forms the baseline from which we can plan and support your child's learning and development.

Each child will have their learning journey, document in different ways. This will include activities your child has done, observations from staff and photographs. Parents are encouraged to feed into this as we believe education is a partnership and ask you to share with staff any learning and development you have witnessed in the home environment. You can do this through talking with staff or uploading it onto Seesaw.





## Starting School

Children begin full time education in the September of the school year that they are five. The transition from part-time education to full time is a smooth experience because children remain in the same classroom for all their time in Early Years. They also take part in school collective worship. This helps them to become familiar with other school routines and they look forward to staying all day. As parents/carers you will be invited to a meeting with the Head Teacher and Early Years teacher and there will be an opportunity to ask any questions which you may have about the school.

## Key Person

A key person is a named member of staff with responsibilities for a small group of children who helps them feel safe and cared for. The key person is a familiar figure who is accessible and available as a point of contact for parents and one who builds relationships with the child and parents/carers.

## Drop off and Pick up

You drop off and pick up your child by going through the gate on the right-hand side of school (next to the car park) and into the Early Years outdoor area.

## School Ping

At St. Mary's, we use an online platform called School Ping to send messages and consent forms about your child's education and to keep you informed with the exciting things happening in school. This will be set up with the email address you provide and can be downloaded from the app stores.

Thank you for taking the time to read this booklet. We hope it has been useful and has answered some of your questions.

We would be grateful if you could return the following documents to school as soon as possible.

- Data Capture Form
- Privacy Notice
- Permission to be Collected
- Medical Needs
- Intimate Care Form

## 2-Year-Old Provision

We now offer care for 2-year-old children through our Little Acorns provision.



These sessions run from 8:43am to 11:45am Monday to Friday. If you would like any further information, please contact the school office on 01642 581716 or complete this online form by following the link or scanning the QR code and a member of the team will contact you.

<https://stmaryscephprimary.co.uk/little-acorns-2-year-old-provision/>

